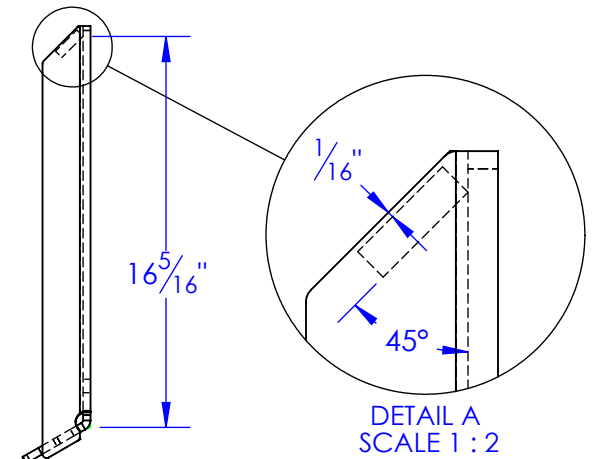
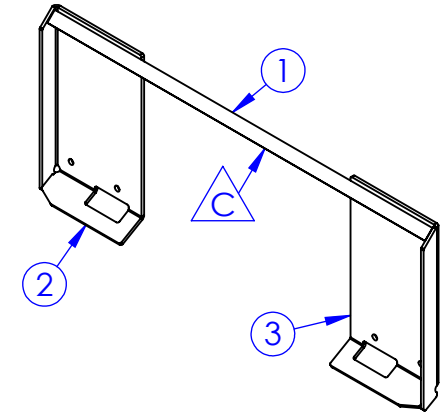
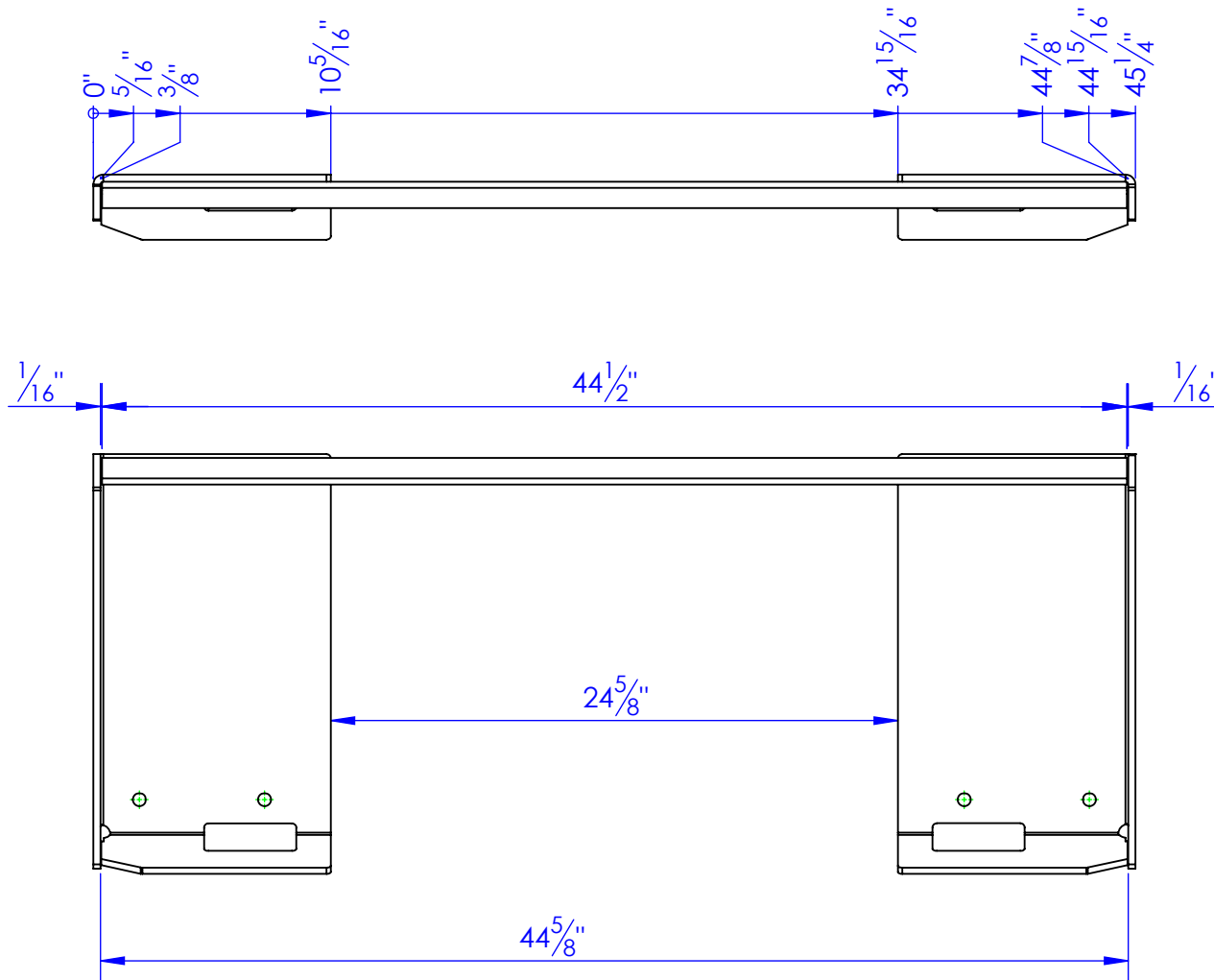


ITEM NO.	PART NUMBER	DESCRIPTION	MATERIAL	QTY.
1	FL 375 X 1.25 L 44.5	LENGTH: 44-1/2"	FL 3/8x1-1/4"	1
2	FP-HG241L	BOBTACH PLATE, HG, LEFT HAND	5/16 HRS	1
3	FP-HG241R	BOBTACH PLATE, HG, RIGHT HAND	5/16 HRS	1

REV.	DESCRIPTION	DATE	APPROVED
A	ADDED HOLES	09/16/02	
B	UPDATED TO NEW DWG FROM HG240	09/13/06	
C	UPDATED FL LENGTH TO 44-1/2 FROM 44-3/8"	7/31/2012	



**PROPRIETARY AND CONFIDENTIAL**  
THE INFORMATION CONTAINED IN THIS DRAWING IS THE SOLE PROPERTY OF TRIPLE C INC. ANY REPRODUCTION IN PART OR AS A WHOLE WITHOUT THE WRITTEN PERMISSION OF TRIPLE C INC. IS PROHIBITED.

DIMENSIONS ARE IN INCHES TOLERANCES: FRACTIONAL $\pm 1/16$ ANGULAR: MACH $\pm 1$ BEND $\pm$ TWO PLACE DECIMAL $\pm 010$ THREE PLACE DECIMAL $\pm 005$	
MATERIAL	--
DO NOT SCALE DRAWING	

NAME	DATE
DRAWN <b>HEATH</b>	1/15/2013
PART # <b>SUB-HG240</b>	
ASM #	
COMMENTS: <b>BOBTACH PLATE, ASSEMBLY</b>	

P.O. BOX 248, SABETHA, KS 66534	
<b>TRIPLE C</b> INC.	
SIZE <b>A</b>	DWG. NO. <b>50-1114 C</b>
SCALE: 1:8	WEIGHT: 44.41
SHEET 1 OF 1	REV. <b>C</b>